

LED Striplight Tunable White

9.16W/m

Features

- Extremely energy saving with low power consumption
- High brightness, multi-functional for linear decoration
- Long average life 30000 hours
- Tunable White from 2500K to 6500K
- Low thermal output with no IR and harmful UV
- No mercury and hazardous substances
- LED Driver Controllers: 24V LED Driver, LED CCT Controller, LED Touch CCT Controller, LED Remote CCT Dimming Controller
- Connectors: 4 Pin Quick Connector, Strip-to-Wire, Strip-to-Strip, 'I' Type Fast Plug, 'T' Type Fast Plug, Wire-to-Wire Fast Plug
- Profiles: Surface mounted, Recessed
- Extra profiles and accessories need to order separately
- Dimmable as option
- High color rendition, Ra ≥90



Diagrams

LED Driver Controllers:



**12V/24V
LED Driver**



**LED CCT
Controller**



**LED Touch CCT
Controller**



**LED Remote CCT
Dimming Controller**

Connectors:



**4 Pin
Quick Connector**



Strip-to-Wire



Strip-to-Strip



**'I' Type
Fast Plug**

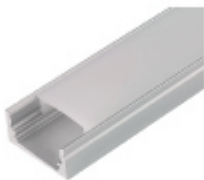


**'T' Type
Fast Plug**

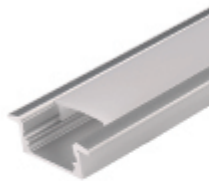
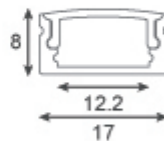


**Wire-to-Wire
Fast Plug**

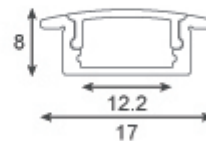
Profiles:



**Surface
mounted**

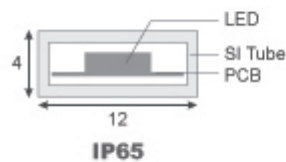
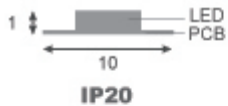


Recessed



* Extra profiles and accessories need to order separately.

Dimensions:



Standards



IP20

IP65

IP67

Applications



Home



Shopping mall



Hotel



Supermarket



Restaurant



Gallery



Museum

Technical Data

Type of Light Source

Lighting Technology Used LED

Non-directional or Directional [NDLS/DLS] NDLS

Mains or Non-mains [MLS/NMLS] NMLS

Connected Light Source No

Color tunable light source No

Envelop [No/Second/Non-Clear] No

High Luminance Light Source No

Anti-glare Shield No

Electrical

Rated Wattage [W] 9.16W/m

On-mode Power [W] 4.58W/m

Standby Power [W] N/A

Networked Standby Power [W] N/A

Rated Voltage [V/Hz] 24V DC, 50/60Hz

Power Factor 1

Input Current (mA) @24V 382

LED SMD 2016

Model

LED 2016 9.16W 10-120 TW 9.16W/m, 24VDC

Luminous Flux (Useful Luminous Flux) [lm]

9.16W/m (4.58W/m) 720lm/m (390lm/m) @2500-6000K

Cutting Unit [mm]

9.16W/m 100mm/12LEDs (24V)

Performance

SDCM <6

Prosperity Lamps & Components Ltd.

Tel: (852) 2511 0022 Fax: (852) 2511 0082 Web: www.prosperitylamps.com Email: info@prosperitylamps.com

Chromaticity coordinates [x, y]	0.44,0.403@3000K / 0.38,0.38@4000K / 0.312,0.335@6500K
Efficacy [lm/W]	85
Color Rendering Index [Ra]	≥90
R9 colour rendering index value	2
Beam Angle [°]	120
Rated Life, Ta@25°C [hrs]	30,000
Lamp Survival Factor	0.9
Lumen Maintenance	0.96
Number of Switching Cycles Before Failure	>15,000
Starting Time [S]	<0.5
Warm Up Time [S]	<2
Premature Failure At 1000hrs	<5%
Displacement Factor [cosØ]	N/A
Flicker Metric [Pst LM]	N/A
Stroboscopic Effect Metric [SVM]	N/A
Mechanical	
Length L [mm]	5000 per reel
Width W [mm] x Height H [mm]	IP20 : 10 x 1
	IP65 : 12 x 4
	IP67-R : 12 x 4.8
	Surface mounted profile : 17 x 8
	Recessed profile : 17 x 8
Number of LEDs	120 pcs/m
Material	Chips: Epistar
Standard Compliance	
CE-LVD	EN62560
CE-EMC	EN55015, EN61547, EN61000-3-2, EN61000-3-3
CE-EMF	EN62493
Environment	RoHS
Mercury Content [mg]	0.0
Energy Class	G
Other	
Dimmable [Yes/Only with specific dimmers/No]	Y
Operation Temperature	-10°C ~ 40°C
Storage Temperature	-20°C ~ 60°C
Energy Consumption in on-mode [kWh/1000h]	10kWh